

# Nā'ālehu Solar

Community Outreach Meeting  
November 16, 2023

Brad Albert  
Hawaii Programs Director



# AGENDA

1. Hawai'i Clean Energy Initiative
2. What is Community Solar
3. Na'alehu Project Details
4. How do I qualify for the program



Natural Energy Laboratory Of Hawaii Authority (NELHA)  
Kona, HI 2003

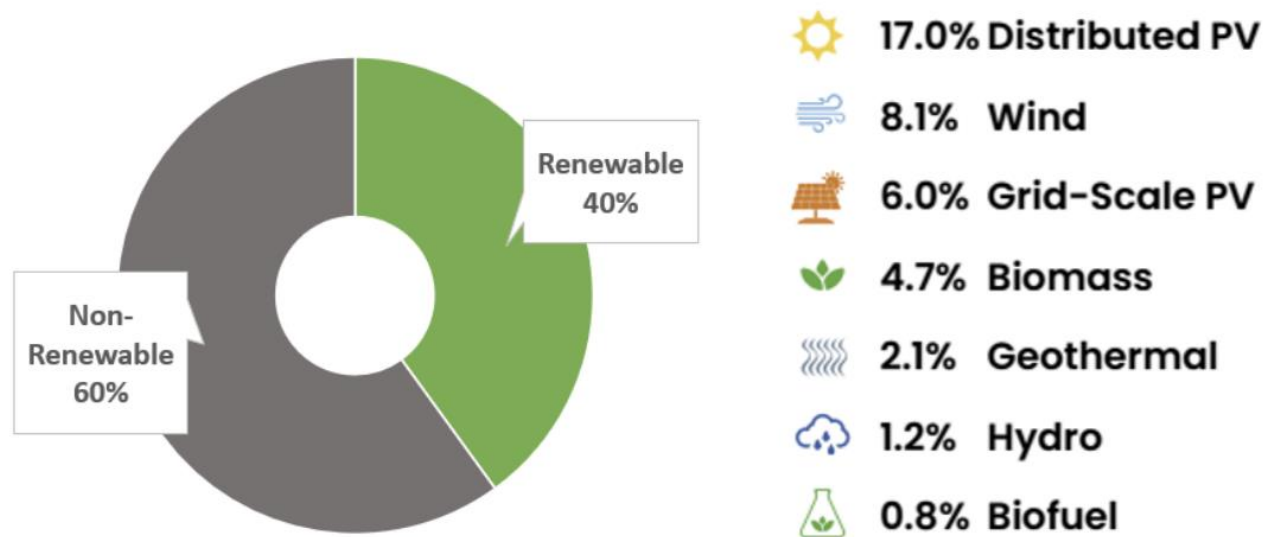


# Hawaii's Clean Energy Initiative (HCEI)

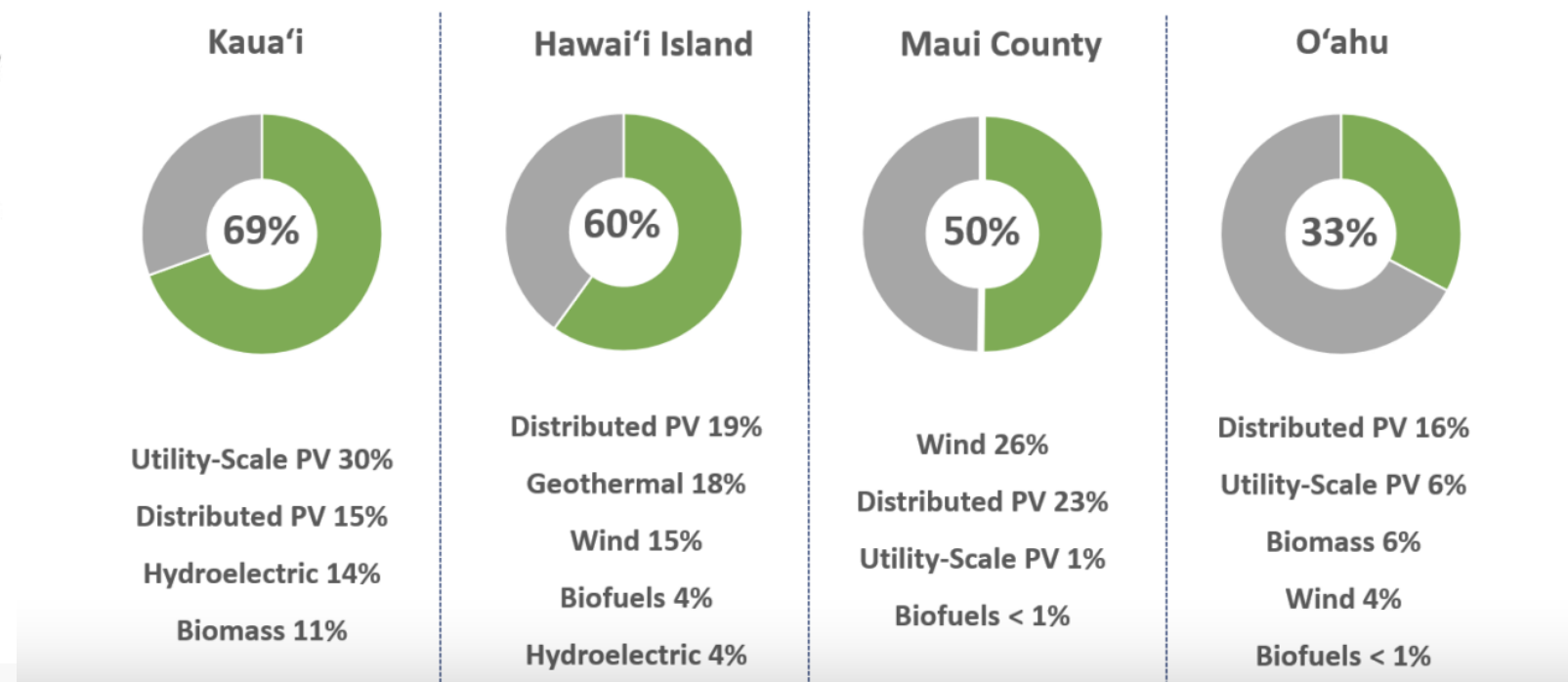
The Hawai'i Clean Energy Initiative renewed Hawai'i's commitment to setting bold clean energy goals that include achieving the nation's first-ever 100 percent renewable portfolio standard (RPS) by the year 2045.

Each island operates a stand-alone grid with a unique portfolio of renewable and fossil fuel energy resources.

## STATEWIDE RENEWABLE ELECTRICITY SALES, 2021



## 2021 RENEWABLE PORTFOLIO, BASED ON ELECTRICITY SALES





We are working to replace this...



...with this.



# HECO Low-to-Moderate Income Community Based Renewable Energy “Shared Solar” Program

In 2015, Act 100 of the Hawai‘i State Legislature directed the Hawai‘i Public Utilities Commission (PUC) to establish a “community-based renewable energy” tariff (Section 269-27.4, Hawai‘i Revised Statutes). The details of the tariffs and programs have been (and are being) developed under PUC Docket No. 2015-0389.

On March 17, 2022, Hawaiian Electric issued a Request for Proposals for Community-Based Renewable Energy Projects for Low-And Moderate-Income customers for the islands of Oahu, Maui, and Hawaii

**On November 22, 2022, Hawaiian Electric awarded Nexamp 7 solar projects to benefit low- and moderate-income customers on Oahu, Maui, and Hawaii Island**



# Community Solar (CBRE) Community Benefits:



**Allows renters, non-profits and other community members to benefit from shared solar energy systems.**

## Locally-Produced Clean Energy

- Local solar and storage systems
- Contributes to Hawaii's 100% renewables goal
- Mitigates impacts of climate change
- Increases grid stability

## Lower Energy Costs for Residents

- Savings for local households
- Savings for non-profit or public entities
- Only Hawai'i County households can enroll
- Job opportunities for residents

# | Nexamp #1 Company in Community Solar

We believe that **access to affordable, clean energy is a right, not a privilege**. Nexamp is lowering barriers and unlocking energy savings for communities from Maui to Massachusetts.

Nexamp is committed to **making solar energy accessible** and **bring energy cost savings to local residents**.

- We own, operate, and maintain all of our solar and storage projects.
- We develop, manage, and maintain community solar farms nationally.
- Our mission is to ensure equity, accessibility, and transparency through a vertically integrated model.

Nexamp Named #1 Community Solar Company by Solar Power World Magazine <https://www.nexamp.com/article/nexamp-named-1-community-solar-company-by-solar-power-world-magazine>

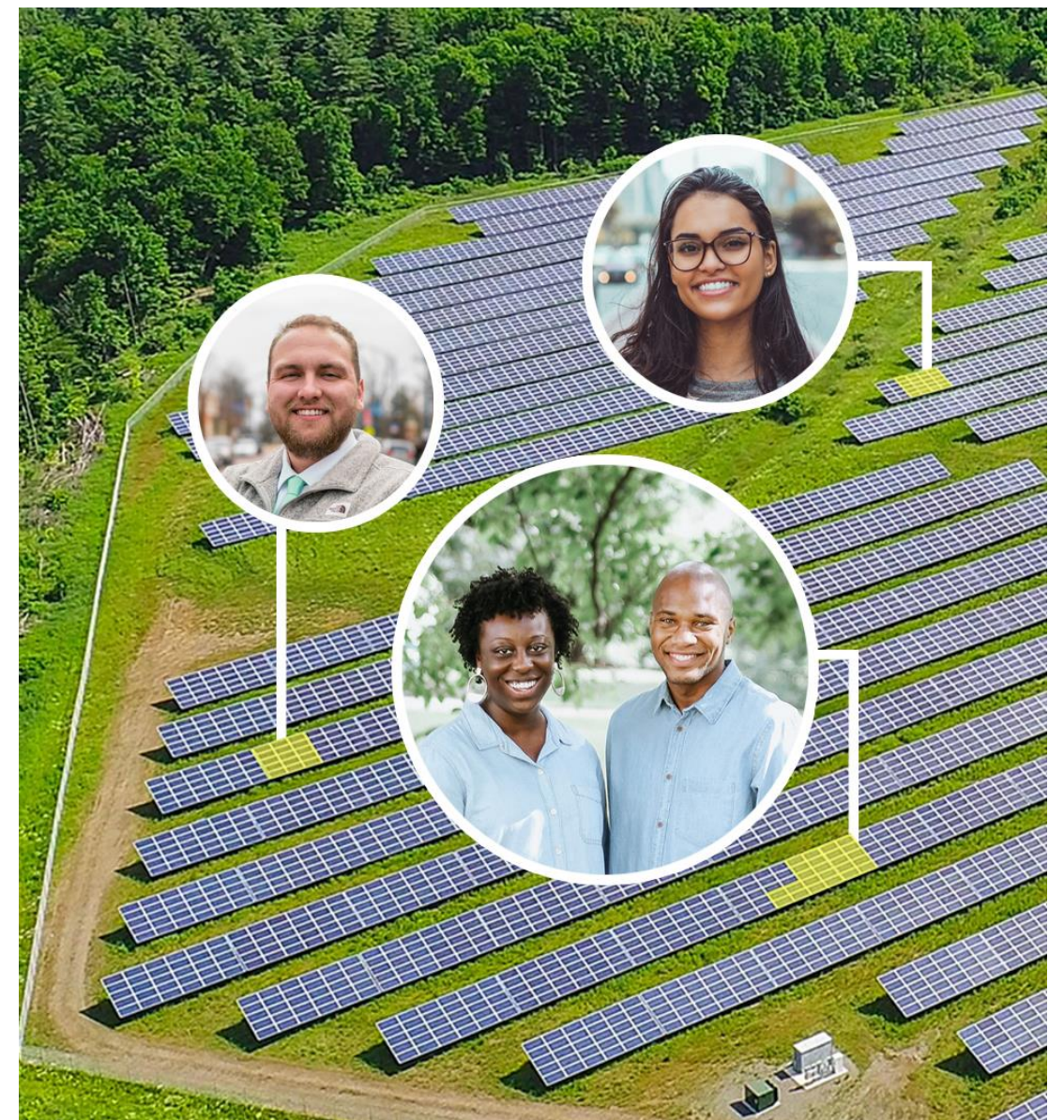




# Community Solar

Community solar unlocks energy bill savings through local solar energy projects. Instead of putting solar on their roof, participants “subscribe” to a shared solar energy system and receive savings on their energy bill.

- ✓ No installation required
- ✓ No upfront cost
- ✓ No credit checks
- ✓ No long-term contracts
- ✓ Renters can join
- ✓ **Save 10-15% off MECO Bill**



MAUI BENEFITS FROM  
SHARED SOLAR



# Nexamp CBRE Awards

<b>Island</b>	<b>Project</b>	<b>Megawatt Capacity (AC)</b>
Oahu	<u>Kaukonahua Solar</u>	6 MW (Solar Only)
Maui	<u>Līpoa Solar</u>	3 MW + Battery
Maui	<u>Makawao Solar</u>	2.5 MW + Battery
Maui	<u>Pi'iholo Road Solar</u>	2.5 MW + Battery
Hawaii Island	<u>Kalaoa Solar A</u>	3 MW + Battery
Hawaii Island	<u>Kalaoa Solar B</u>	3 MW + Battery
Hawaii Island	<u>Naalehu Solar</u>	3 MW + Battery





# Nā‘ālehu Solar

- Location: Makai side of Hawai‘i Belt Road on the quarry property
- PV 2.5 MW AC + 2.7 MW Battery
- 10-15% HECO bill savings for Naalehu area residents
- The project has the capacity to:
  - service up to 800 homes
  - or approximately 500\* LMI homes and 30\* nonprofit businesses
- Estimated date of program commencement 2026

<https://www.nexamp.com/naalehu-solar>

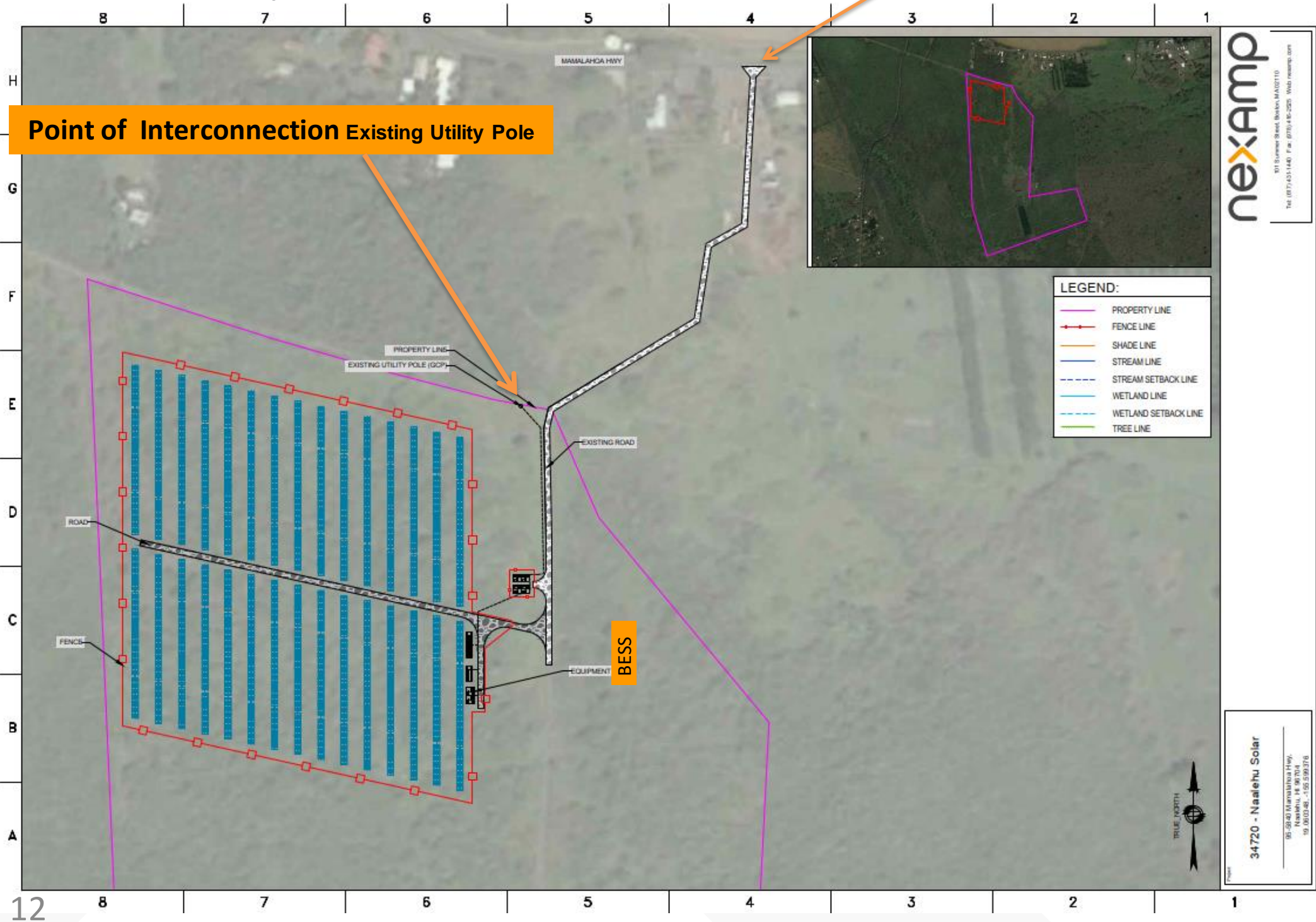


# Project Location





# Solar Array Location -



**Project Acreage**  
20.74 ACRES

**Parcel Acreage**  
189.07 ACRES

**Project/Parcel**  
10%

# Energy Storage Safety

Fire is a risk with grid-scale electrical equipment, with Lithium-ion Energy Storage being included. Nexamp selects its energy storage technology and designs its projects with safety as its core design principle.

## Nexamp Safety Measures:

**Selecting Equipment Manufacturers with proven safety and performance track records**

## Adhering to Energy Storage industry best practices

- NFPA 855 (2023) - Energy Storage Best Practice Guide referenced by state fire codes across the U.S.
- Certifications and testing: UL 9540A and UL 9540
- Hazard Mitigation Analysis: Used to determine the risk associated with a project and design mitigations that reduce those risks
- Emergency Response Plan: Comprehensive (site-specific) guidance on emergency response protocols for all project stakeholders

## First responder training:

Nexamp meets with Maui Fire Dept prior to the construction of the energy storage system and then annually to update fire safety plan.

## Wild-fire protection by design:

- Vegetation control, adequate spacing and setbacks, electrical isolation, etc.



# Participant Eligibility

Subscriptions for Nexamp's Community Solar project will be reserved exclusively for low and middle-income (LMI) households in Hawai'i County.

Community Solar is designed to lower energy costs for everyday Hawai'ians.

## General Eligibility

- Must be a HECO residential customer
- Must reside in Hawai'i County
- Must earn less than program income low-to-moderate ("LMI") income limits
- About 1,000 households can enroll in the project.

Non-profits, small businesses, and public entities can join given Nexamp approval.

*Refer to Hawaiian Electric's HECO Rule 29 and Appendices for eligibility and qualification information.*

# Nā'ālehu Solar 2010 Hawaii Census Tracts

WHAT IS THE  
NAALEHU SOLAR PROJECT?

**First priority enrollment goes to Naalehu community**

**After 3 months subscription will be open to all LMI Subscribers who live on Hawaii Island with an active HECO account**





# Participant Income Qualification

Most local households meet income eligibility requirements.

## Residential Income Qualification

1. Household's income must meet program income limits (see table)
2. Participant in a qualified government assistance program
3. Qualifying low-income zip code according to HECO

*Verified through signed attestation of income, proof of participation in social benefit programs, or proof of residence in eligible zip code.*

## Non-profit, Small Business, Public Entity

1. A city, county, state or federal governmental agency; or
2. An IRC Section 501(c)(3) organization; or
3. A participant in the Energy Advantage program within the Affordability and Accessibility program established by Hawaii Energy for certain small businesses

Non-residential entities must be approved by Nexamp.

## 2023 Eligible Income Limits

Household Size	Income Limit
1	\$64,900
2	\$74,150
3	\$83,400
4	\$92,650
5	\$100,100
6	\$107,500

*MECO sets the income limits in Rule 29*

*Refer to Hawaiian Electric's MECO Rule 29 and Appendices for eligibility and qualification information.*

# How to Enroll

Nexamp currently plans to start enrollment in mid-late 2025. Households can enroll directly with Nexamp or through an online portal set up by HECO.

**A three-month Priority Enrollment period will be available to households closest to the solar project.**

Receive updates by following our website:

<https://www.nexamp.com/naalehu-solar>

- **Nexamp will notify the community when enrollment is open.**
- Once the projects are built and online, the subscribers start receiving credits and savings!



# Mahalo!

<https://www.nexamp.com/naalehu-solar>

Email : [BAAlbert@nexamp.com](mailto:BAAlbert@nexamp.com)